

Switch Evaluation Board

The Board-SW evaluation board is compatible with ACP 1x2, 2x2, dual 1x2, dual 2x2, 1x4 mechanical and MEMS 1xN switches. It comes with two control modes: manual push buttons and PC control via serial communications with a USB connection. It is well-suited for laboratory use or switch performance evaluation.

FEATURES

Micro-USB Power and
PC Serial Controls
Flexible Configuration
User-Friendly GUI

APPLICATION

1xN MEMS Switch
1x2, 2x2, dual 1x2, 2x2 Bypass Latching and Non- Latching Mechanical Switch
1x4 Latching and Non-Latching Mechanical Switch

PERFORMANCE SPECIFICATIONS

Parameter	Specifications
Hot Pluggable	Yes
Power Voltage	5V
Interface	Micro-USB
Dimension	92 x 82mm

AVAILABLE CONFIGURATION

Switch Type	Number of relays	S	D	E
	Control Type	Manual and Computer		Computer
L=Latching		√	√	
N=Non-Latching		√	√	
M=MEMS				√

ORDERING INFORMATION

Part number: Board-SW-x-x-x

Board-SW-	Switch Type	Number of Relay	Control Type
	L=Latching	S=Single relay 1x2,2x2	M=Manual Cntrl
	N=Non-latching	D=Dual relay 1x4 mech	A=Computer Control
	M=MEMS	E=MEMS Switch	

Switch Evaluation Board

APPLICATION PHOTOS:

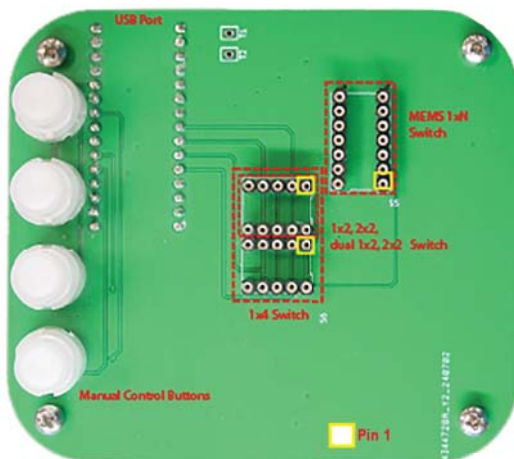


Figure1: ACP Switch Evaluation Board.



Figure 2: Micro-USB port for power and computer controls. The bottom of the USB port is measured 8.8 mm below the top layer of the board.

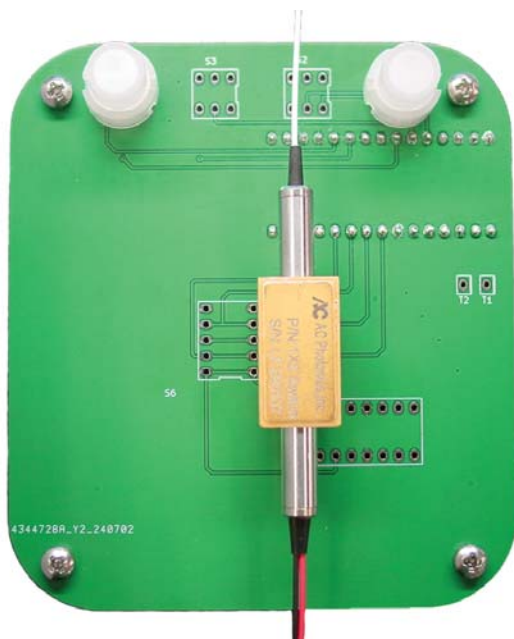


Figure 3: 1x2 mechanical switch (H package) mounted on the evaluation board.

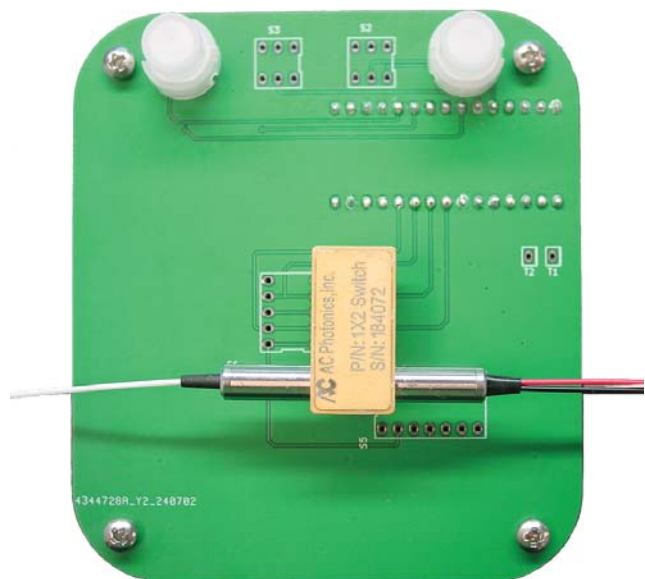


Figure 4: 1x2 mechanical switch (V package) mounted on the evaluation board.

Switch Evaluation Board

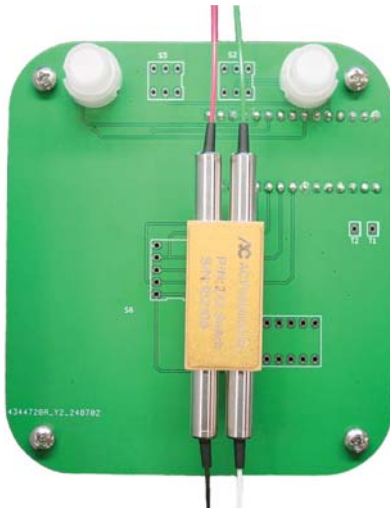


Figure 5: 2x2 mechanical switch mounted on the evaluation board.



Figure 6: 1x4 mechanical switch mounted on the evaluation board.



Figure 7: MEMS switch mounted on the evaluation board.

MECHANICAL DIMENSIONS

