



Singlemode to Multimode Fiber Converter

PERFORMANCE SPECIFICATIONS

Parameter	Specifications
Operating Wavelength	850nm, 1310nm, 1550nm or custom
Bandwidth	± 50nm
Insertion Loss	≤ 0.8dB
Coupling Power Ratio (CPR)	≥ 18dB
Operating Temperature	- 40 to +85°C
Storage Temperature	- 40 to +85°C
Package Dimensions (LxWxH)	89mm x 51mm x 8.0mm

FEATURES

- Low Insertion Loss
- Fully Filled Mode Distribution
- High Environmental Stability

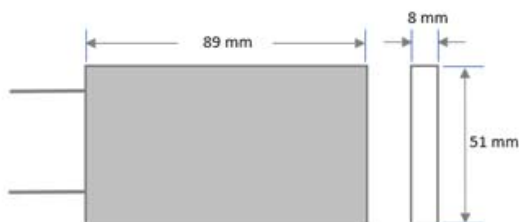
APPLICATION

- Test and Measurement
- Instrumentation

Note:

All values referenced are without connector.

MECHANICAL DIMENSIONS

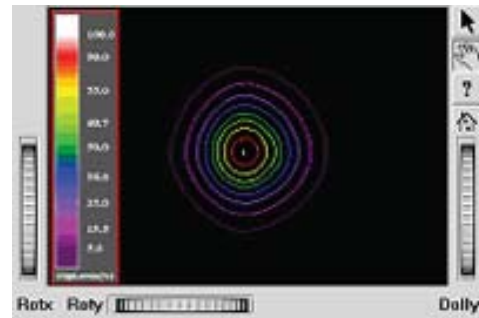
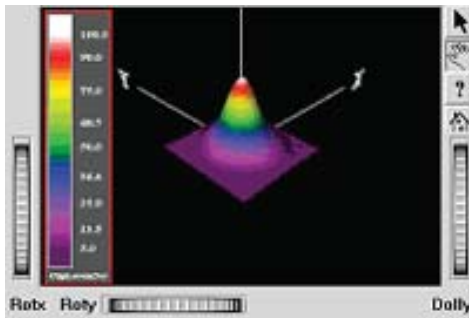


PORT CONFIGURATION

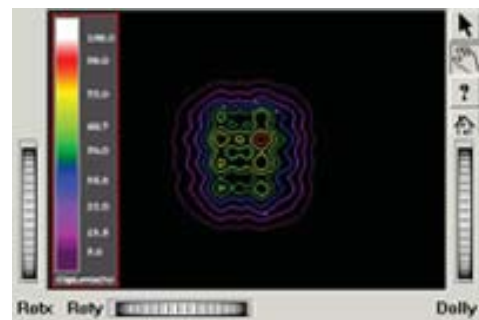
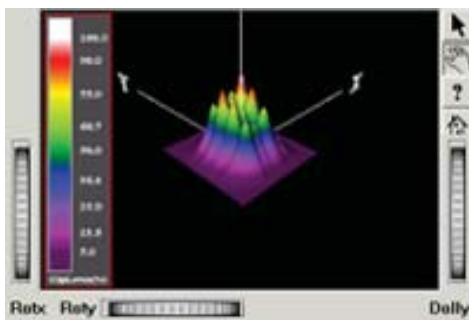


Singlemode to Multimode Fiber Converter

INPUT MODE



OUTPUT MODE



ORDERING INFORMATION

SMC	Operating Wavelength	Input Fiber Type*	Output Fiber Type	Pigtail Style	Fiber Length	In Connector	Out Connector
	85=850nm	2=SMF-28 Ultra	A=50/125	1=Bare fiber	05=0.5m	0 = None	0 = None
	31=1310nm	(G.657.A1)	B=62.5/125	2=900um	10=1.0m	1 = FC/APC	1 = FC/APC
	55=1550nm	3=ClearCurve		loose tube	·	2 = FC/PC	2 = FC/PC
	SS=Custom	ZBL(G.657.B3)		3=3mm jacket	·	3 = SC/APC	3 = SC/APC
		4=Hi780		4=2mm jacket	·	4 = SC/PC	4 = SC/PC
		5=Hi980			20=2.0m	5 = ST	5 = ST
		6=Hi1060				6 = LC/UPC	6 = LC/UPC
						7 = LC/APC	7 = LC/APC

*1=SMF-28(G.652) is available upon request.