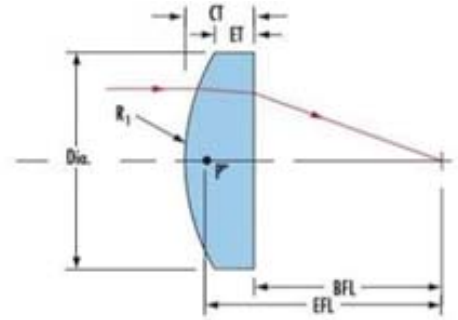


Plano-Convex Glass lens



Material Option: N-BK7,UV Fused silica,N-SF11,
 Focal Length Tolerance: $\pm 1\%$
 Diameter Tolerance: $+0.00/-0.05\text{mm}$
 Clear Aperture: 90%
 Center Thickness Tolerance: $\pm 0.20\text{mm}$
 Centration Tolerance: $<0.05\text{mm}$
 Scratch/Dig: 20-10
 Surface Irregularity: $\lambda/10$ @633nm
 Coating option: Uncoated, VIS, NIR, SWIR, UV



ORDERING INFORMATION

Product code	Diameter	Focal length	Material	Coating
PLCX	D	f	N-SF11 N-BK7 UV FS	None VIR NIR SWIR UV

COMMON PRODUCT LIST

Part Number	Diameter \varnothing (mm)	Focal Length (mm)	Material	CT (mm)
PLCX-D10-f10-SF11	10	10	N-SF11	3.3
PLCX-D10-f15-SF11		15		3
PLCX-D12-f12-SF11	12	12	N-SF11	4
PLCX-D12.5-f15-BK7	12.5	15	N-BK7	4.5
PLCX-D12.5-f20-BK7		20		4
PLCX-D12.5-f25-BK7	25			
PLCX-D12.5-f30-BK7	30			
PLCX-D12.5-f40-BK7	12.5	40	N-BK7	3.5
PLCX-D12.5-f50-BK7		50		
PLCX-D12.5-f75-BK7		75		
PLCX-D12.5-f100-BK7	12.5	100	N-BK7	3
PLCX-D12.5-f125-BK7		125		
PICX-D12.5-f175-BK7		175		
PLCX-D12.5-f250-BK7		250		
PLCX-D12.5-f15-UV	12.5	15	UV FS	6
PLCX-D12.5-f20-UV		20		5
PLCX-D12.5-f25-UV		25		4.5
PLCX-D12.5-f30-UV		30		4

Plano-Convex Glass lens

Part Number	Diameter Ø (mm)	Focal Length (mm)	Material	CT (mm)
PLCX-D12.5-f40-UV	12.5	40	UV FS	3.5
PLCX-D12.5-f50-UV		50		
PLCX-D12.5-f75-UV		75		
PLCX-D12.5-f100-UV		100		
PLCX-D12.5-f125-UV		125		
PLCX-D12.5-f175-UV		175		
PLCX-D12.5-f250-UV		250		
PLCX-D20-f20-SF11	20	20	N-SF11	4.6
PLCX-D20-f25-SF11		25		4
PLCX-D25-f25-BK7	25	25	N-BK7	6.5
PLCX-D25-f37.5-BK7		37.5		6
PLCX-D25-f62.5-BK7	25	62.5	N-BK7	4
PLCX-D25-f75-BK7		75		
PLCX-D25-f100BK7		100		
PLCX-D25-f125BK7		125		
PLCX-D25-f150-BK7		150		
PLCX-D25-f200-BK7		200		
PLCX-D25-f250-BK7		250		
PLCX-D25-f175-BK7	25	175	N-BK7	3
PLCX-D25-f300-BK7		300		
PLCX-D25-f350-BK7		350		
PLCX-D25-f400-BK7	25	400	N-BK7	2.4
PLCX-D25-f500-BK7		500		2.3
PLCX-D25-f700-BK7		700		2.2
PLCX-D25-f1000-BK7		1000		2.1
PLCX-D25-f600-BK7	25	600	N-BK7	3
PLCX-D25-f800-BK7		800		
PLCX-D25-f37.5-UV	25	37.5	UV FS	9
PLCX-D25-f50-UV		50		7
PLCX-D25-f62.5-UV	25	62.5	UV FS	6
PLCX-D25-f75-UV		75		
PLCX-D25-f100-UV	25	100	UV FS	5
PLCX-D25-f125-UV		125		
PLCX-D25-f150-UV	25	150	UV FS	4.5
PLCX-D25-f175-UV		175		
PLCX-D25-f200-UV		200		
PLCX-D25-f250-UV	25	250	UV FS	4
PLCX-D25-f300-UV		300		
PLCX-D25-f500-UV		500		
PLCX-D25-f600-UV		600		
PLCX-D25-f800-UV		800		
PLCX-D25-f1000-UV		1000		

Plano-Convex Glass lens

Part Number	Diameter Ø (mm)	Focal Length (mm)	Material	CT (mm)
PLCX-D30-f30-SF11	30	30	N-SF11	6.9
PLCX-D30-f40-SF11		40		5
PLCX-D40-f40-SF11	40	40	N-SF11	8.7
PLCX-D40-f50-UV	40	50	UV FS	15
PLCX-D50-f50-SF11	50	50	N-SF11	12
PLCX-D50-f75-UV	50	75	UV FS	13
PLCX-D50-f100-UV		100		11
PLCX-D50-f125-UV		125		9
PLCX-D50-f75-BK7	50	75	N-BK7	10.5
PLCX-D50-f80-BK7		80		10.4
PLCX-D50-f95-BK7		95		9.7
PLCX-D50-f100-BK7		100		9
PLCX-D50-f125-BK7		125		7
PLCX-D50-f150-BK7		150		6
PLCX-D50-f200-BK7		200		6
PLCX-D50-f250-BK7		250		4.4
PLCX-D50-f300-BK7		300		3.8
PLCX-D50-f500-BK7		500		3.2
PLCX-D50-f750-BK7		750		3
PLCX-D50-f800-BK7		800		2.8
PLCX-D50-f1000-BK7		1000		2.6

COATING CODE: AR COATING, R AVG<0.5% AT WAVELENGTH RANGE

None=no coating

VIR = AR Coating at 400~700nm.

NIR= AR Coating at 650~1050nm.

SWIR = AR Coating at 1000~1650nm.

UV = AR Coating at 250~400nm (apply to UV FS material lens only).

MATERIAL REFRACTION INDEX:

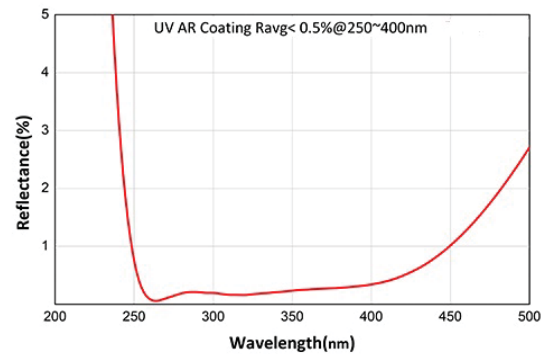
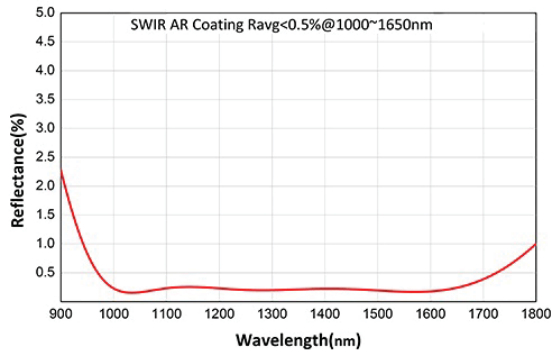
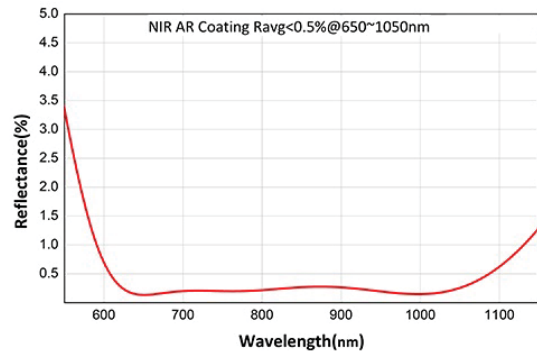
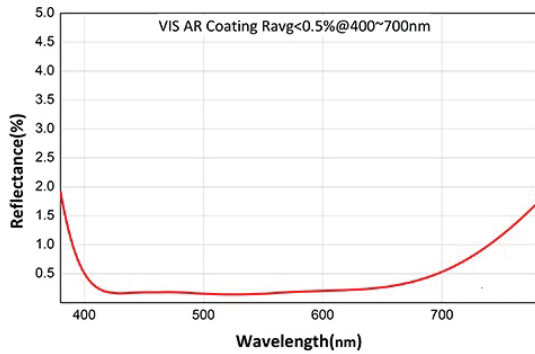
N-SF11, Index of refraction is 1.785 at 587.6 nm

N-BK7, Index of refraction is 1.517 at 587.6 nm.

UV FS, Index of refraction is 1.458 at 587.6 nm

Plano-Convex Glass lens

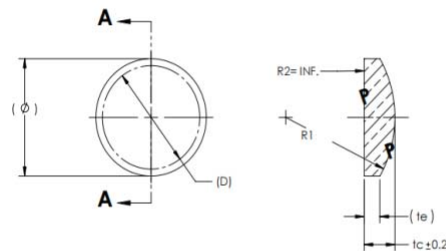
PLANO-CONVEX GLASS LENS COATING



PLANO-CONVEX GLASS LENS DRAWING

NOTES:

1. ALL DIMENSIONS IN MILLIMETERS.
2. SURFACES MARKED "P" POLISH, ALL OTHERS FINISH GROUND
3. FOCAL LENGTH TOLERANCE: $\pm 1\%$.
4. SCRATCH/DIG: 20-10
5. CENTRTION: 1 ARC MINUTES
6. SURFACE IRREGULARITY: $N/10 @ 633nm$
7. EDGE BEVEL:
 - a. 0.10-0.25mm FACE WIDTH AT 45° FOR Dia $\leq 25.0mm$
 - b. 0.25-0.50mm FACE WIDTH AT 45° FOR Dia $\geq 25.0mm$
8. MIN CLEAR APERAURE IS CENTRAL 90% OF DIAMETER
9. MATERIAL OPTION: N-BK7, UV Fused silica, N-SF11
10. COATING OPTION:
 - a. UNCOATED
 - b. VIR AR COATING, Ravg $\leq 0.5\%$ @ 400-700nm
 - c. NIR AR COATING, Ravg $\leq 0.5\%$ @ 650-1050nm
 - d. SWIR AR COATING, Ravg $\leq 0.5\%$ @ 1000-1650nm
 - e. UV AR COATING, Ravg $\leq 0.5\%$ @ 250-400nm



Third Angle Projection			
	TITLE: Plano Convex Lens		REV A
ALL DIMS IN mm	SIZE: A4	DWG NO: PLCX-	
SCALE	SHEET 01	OF 01	