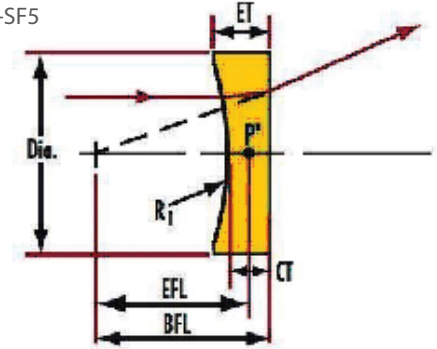


# Plano-Concave Glass lens



Material Option: N-BK7,UV Fused silica,N-SF11,N-SF5  
 Focal Length Tolerance:  $\pm 1\%$   
 Diameter Tolerance:  $+0.00/-0.05\text{mm}$   
 Clear Aperture: 90%  
 Center Thickness Tolerance:  $\pm 0.20\text{mm}$   
 Centration Tolerance:  $<0.05\text{mm}$   
 Scratch/Dig: 20-10  
 Surface Irregularity:  $\lambda/10$  @633nm  
 Coating option: Uncoated, VIS, NIR, SWIR, UV



## ORDERING INFORMATION

Product code	Diameter	Focal length	Material	Coating
PLCC	D	f	N-SF11 N-SF5 N-BK7 UV FS	None VIR NIR SWIR UV

## COMMON PRODUCT LIST

Part Number	Diameter $\varnothing$ (mm)	Focal Length (mm)	Material	CT (mm)
PLCC-D6.3-f10-UV	6.3	-10	UV FS	2.8
PLCC-D6.3-f10-UV		-12.5		2.6
PLCC-D8.0-f15-BK7	8	-15	N-BK7	3
PLCC-D10-f20-BK7	10	-20	N-BK7	3.2
PLCC-D12-f12-SF11	12	-12	N-SF11	4.12
PLCC-D12-f18-SF11		-18		4.7
PLCC-D12-f24--BK7	12	-24	N-BK7	4.8
PLCC-D12-f48--BK7		-48		4.12
PLCC-D12.5-f12.5-BK7	12.5	-12.5	N-BK7	6.2
PLCC-D12.5-f15-BK7		-15		4.9
PLCC-D12.5-f20-BK7		-20		3.9
PLCC-D12.5-f25-BK7		-25		3.5
PLCC-D12.5-f30-BK7		-30		3.2
PLCC-D12.5-f40-BK7		-40		2.9
PLCC-D12.5-f50-BK7		-50		2.7
PLCC-D12.5-f75-BK7		-75		2.5
PLCC-D12.5-f100-BK7		-100		2.4
PLCC-D12.5-f125-BK7		-125		2.3
PLCC-D12.5-f175-BK7		-175		2.2
PLCC-D12.5-f250-BK7		-250		2.1

## Plano-Concave Glass lens

Part Number	Diameter Ø (mm)	Focal Length (mm)	Material	CT (mm)		
PLCC-D12.5-f15-UV	12.5	-15	UV FS	5		
PLCC-D12.5-f20-UV		-20		4		
PLCC-D12.5-f25-UV		-25		4		
PLCC-D12.5-f30-UV		-30		4.2		
PLCC-D12.5-f40-UV		-40		4.4		
PLCC-D12.5-f50-UV		-50		4.2		
PLCC-D12.5-f75-UV		-75		4.5		
PLCC-D12.5-f100-UV		-100		4.4		
PLCC-D12.5-f125-UV		-125		4.3		
PLCC-D12.5-f175-UV		-175		4.2		
PLCC-D12.5-f250-UV		-250		4.1		
PLCC-D25-f25-SF11		25		-25	N-SF11	7.75
PLCC-D25-f35-SF11	-35		63.6			
PLCC-D25-f25BK7	25	-25	N-BK7	10.9		
PLCC-D25-f50BK7		-50		4.6		
PLCC-D25-f75-BK7		-75		4		
PLCC-D25-f100-BK7		-100		3.5		
PLCC-D25-f125-BK7		-125		3.2		
PLCC-D25-f150-BK7		-150		3		
PLCC-D25-f175-BK7		-175		2.8		
PLCC-D25-f200-BK7		-200		2.7		
PLCC-D25-f250-BK7		-250		2.6		
PLCC-D25-f300-BK7		-300		2.5		
PLCC-D25-f350-BK7		25		-350	N-BK7	2.4
PLCC-D25-f400-BK7				-400		2.4
PLCC-D25-f500-BK7	25	-500	N-BK7	2.3		
PLCC-D25-f600-BK7	25	-600	N-BK7	2.2		
PLCC-D25-f700-BK7		-700		2.2		
PLCC-D25-f800-BK7		-800		2.2		
PLCC-D25-f1000-BK7	25	-1000	N-BK7	2.1		
PLCC-D25-f37.5-UV	25	.37.5	UV FS	9.7		
PLCC-D25-f75-UV		-75		7.1		
PLCC-D25-f100-UV		-100		6.6		
PLCC-D25-f125-UV		-125		6.2		
PLCC-D25-f150-UV		-150		6		
PLCC-D25-f175-UV		-175		6.9		
PLCC-D25-f200-UV		-200		6.8		
PLCC-D25-f250-UV		-250		6.6		
PLCC-D25-f300-UV		-300		6.5		
PLCC-D25-f350-UV		-350		6.4		

## Plano-Concave Glass lens

Part Number	Diameter Ø (mm)	Focal Length (mm)	Material	CT (mm)
PLCC-D25-f500-UV	25	-500	UV FS	6.3
PLCC-D25-f600-UV		-600		6.3
PLCC-D25-f800-UV	25	-800	UV FS	6.2
PLCC-D25-f1000-UV		-1000		6.2
PLCC-D50-f75-BK7	50	-75	N-BK7	11.8
PLCC-D50-f100-BK7		-100		8.2
PLCC-D50-f125-BK7		-125		7.8
PLCC-D50-f150-BK7		-150		7
PLCC-D50-f200-BK7		-200		5
PLCC-D50-f250-BK7		-250		5.4
PLCC-D50-f325-BK7		-325		4.8
PLCC-D50-f500-BK7		-500		4.2
PLCC-D50-f600-BK7		-600		3
PLCC-D50-f625-BK7		-625		3.9
PLCC-D50-f750-BK7		-750		3.8
PLCC-D50-f1000-BK7		-1000		3.6
PLCC-D50-f1500-BK7		-1500		3.4
PLCC-D50-f2000-BK7		-2000		3.3

### COATING CODE: AR COATING, R AVG<0.5% AT WAVELENGTH RANGE

None=no coating

VIR = AR Coating at 400~700nm.

NIR= AR Coating at 650~1050nm.

SWIR = AR Coating at 1000~1650nm.

UV = AR Coating at 250~400nm (apply to UV FS material lens only).

### MATERIAL REFRACTION INDEX:

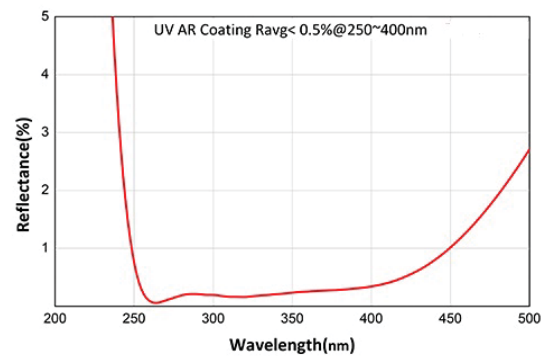
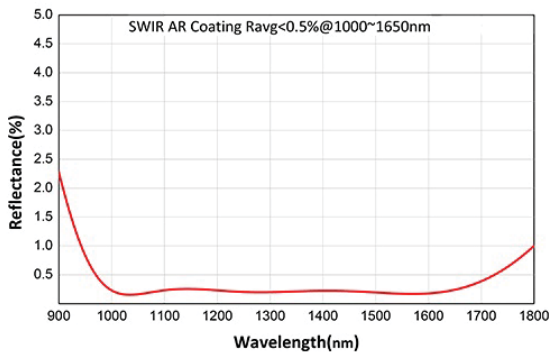
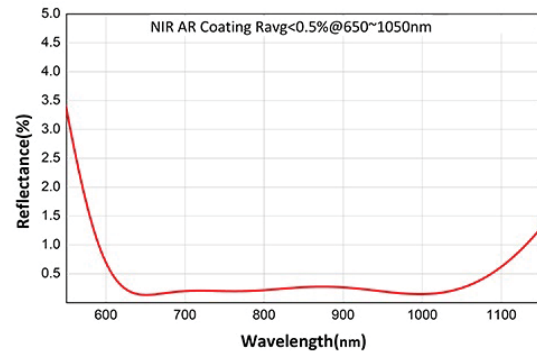
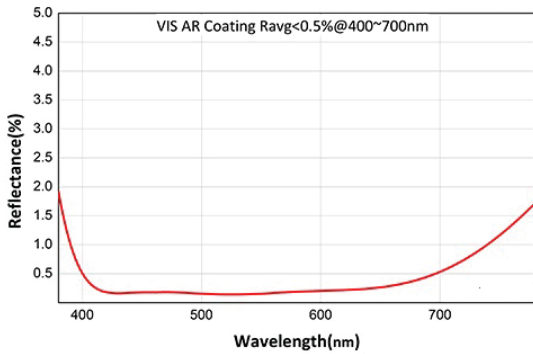
N-SF11, Index of refraction is 1.785 at 587.6 nm

N-BK7, Index of refraction is 1.517 at 587.6 nm.

UV FS, Index of refraction is 1.458 at 587.6 nm

## Plano-Concave Glass lens

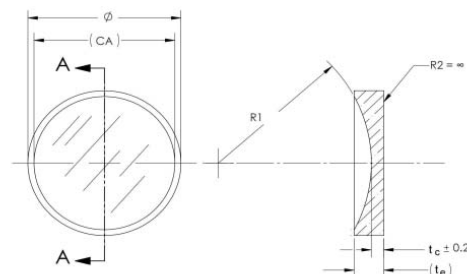
### PLANO-CONCAVE GLASS LENS COATING



### PLANO-CONCAVE GLASS LENS DRAWING

**NOTES:**

1. ALL DIMENSIONS IN MILLIMETERS.
2. SURFACES MARKED "P" POLISH, ALL OTHERS FINISH GROUND
3. FOCAL LENGTH TOLERANCE:  $\pm 1\%$ .
4. SCRATCH/DIG: 20-10
5. CENTRITION: 1 ARC MINUTES
6. SURFACE IRREGULARITY:  $N/10 @ 633nm$
7. EDGE BEVEL:
  - a. 0.10-0.25mm FACE WIDTH AT  $45^\circ$  FOR Dia  $\leq 25.0mm$
  - b. 0.25-0.50mm FACE WIDTH AT  $45^\circ$  FOR Dia  $\geq 25.0mm$
8. MIN. CLEAR APERTURE IS CENTRAL 90% OF DIAMETER
9. MATERIAL OPTION: N-BK7, UV Fused silica, N-SF11
10. COATING OPTION:
  - a. UNCOATED
  - b. VIS AR COATING, Ravg  $\leq 0.5\%$  @ 400-700nm
  - c. NIR AR COATING, Ravg  $\leq 0.5\%$  @ 650-1050nm
  - d. SWIR AR COATING, Ravg  $\leq 0.5\%$  @ 1000-1650nm
  - e. UV AR COATING, Ravg  $\leq 0.5\%$  @ 250-400nm



Third Angle Projection			
		TITLE: <b>Plano Concave Lens</b>	
SIZE: <b>A4</b>	DWG NO.:	SCALE:	REV: <b>A</b>
ALL DIMS IN: mm		SHEET: 01 OF 01	