

Compact CWDM Single & Dual side

ACP's Coarse wavelength division multiplexer (CWDM) utilizes thin film coating technology and proprietary design of non-flux metal bonding micro optics packaging. It provides low insertion loss, high channel isolation, wide pass band, low temperature sensitivity and epoxy free optical path.

PERFORMANCE SPECIFICATIONS

Parameter	Specifications					
	Mux/Demux					
Operating Wavelength	1270 ~ 1610 nm					
Center Wavelength (CWL)	1270, 1290,1610nm or 1271, 1291,1611nm					
Minimum Channel Spacing	20nm					
Channel Passband	≥ 13nm					
Package Type	Dual side			Single side		
Channel configuration	4 Ch	4+1 Ch ¹⁾	8 Ch	8+1 Ch ¹⁾	4 Ch	8 Ch
Insertion Loss (Channel ports)	≤ 1.4dB	≤ 1.5dB	≤ 1.5dB	≤ 1.6dB	≤ 1.0dB	≤ 1.5dB
Insertion Loss (1310nm port)		≤ 1.2dB		≤ 1.2dB		
Insertion Loss (UPG port)	≤ 1.5dB ²⁾	≤ 1.7dB ²⁾	≤ 1.6dB ²⁾	≤ 2.0dB ²⁾		
Channel Isolation (Demux only)	≥ 30dB (Adjacent)					
	≥ 40dB (Non-adjacent)					
Channel Ripple	≤ 0.50dB					
Polarization Dependent Loss	≤ 0.20dB					
Polarization Mode Dispersion	≤ 0.20ps					
Directivity	≥ 55dB					
Return Loss	≥ 45dB					
Optical Power	≤ 300mW					
Operating Temperature	0 to +70°C (Extended temperatures are also available upon request)					
Storage Temperature	- 40 to +85°C					
Package Dimensions (LxWxH)	CS= 57x28.8x8.0mm case (Single side)					
	CD= 53.8x28x8.0mm case (Dual side)					

Note:

1) Add 1310nm port

2) UPG: port upgrade for future expansion

All values referenced are without connector.

FEATURES

- Compact Components
- Excellent Thermal Stability
- Low Ripple Filter
- Low Insertion Loss
- Wide Pass Band
- High Channel Isolation

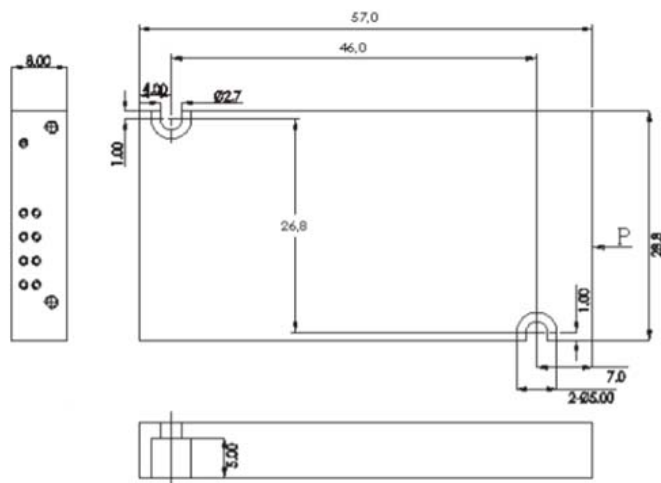
APPLICATION

- Broadband Systems
- Optical Add/Drop Multiplexing
- Metro/Access Communication Networks
- Fiber Optic Instruments

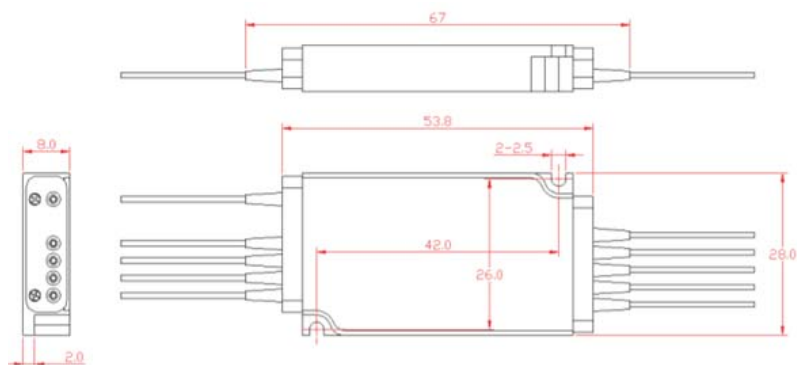
Compact CWDM Single & Dual side

MECHANICAL DIMENSIONS

Single side

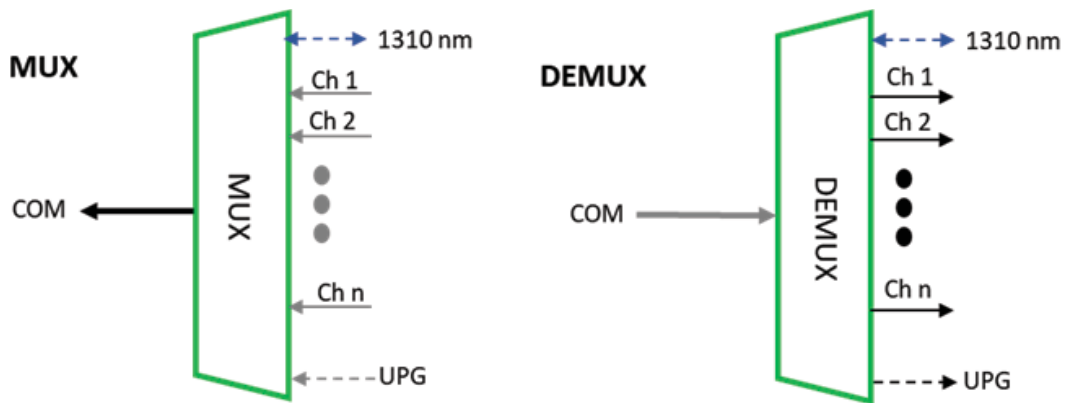


Dual side



Compact CWDM Single & Dual side

CHANNEL CONFIGURATIONS



ORDERING INFORMATION

CWDM	Channel Spacing*	Number of Channels	Configuration	1st Channel Wavelength	Package	Fiber Type**	Fiber Length***	Pigtail Style	Connector	Option
	1=10nm	04=4 Channels	M=Mux	270= 1270 nm	CS=Single side	2=SMF-28 Ultra (G.657.A1)	05=0.5m	1=Bare fiber	0=None	None=Standard
	2=20nm	08=8 Channels	D=Demux	271=1271 nm	CD=Dual side	3=ClearCurve ZBL(G.657.B3)	10=1.0m	2=900um loose tube	1=FC/APC	U0=UPG
	4=4nm							3=3mm jacket	2=FC/PC	
								4=2mm jacket	3=SC/APC	
				610 = 1610nm			20=2.0m	5=1.6mm jacket	4=SC/PC	
				611 = 1611nm					5=ST	
									6=LC/UPC	
									7=LC/APC	

*custom order for 10nm and 4nm channel spacing.

**1=SMF-28(G.652) is available upon request.

***Other length is available upon request, However, 900µm loose tube is only up to 2m.